

Art.No.
5908201904

08/2015



Scheppach



AB1600

AUS

Demolition Hammer
Instruction manual

Explanation of the symbols on the device



WARNING - Read the operating instructions to reduce the risk of injury



Wear safety goggles!



Wear a dust mask!



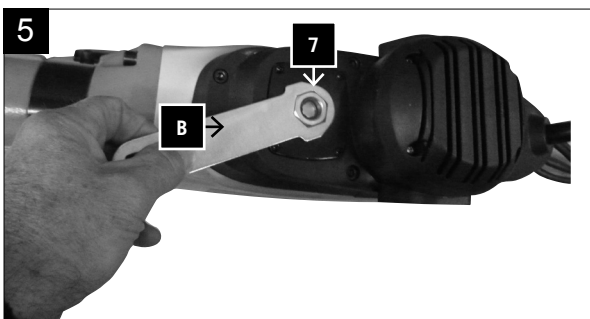
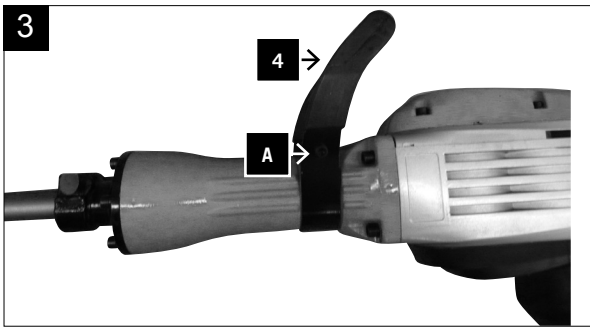
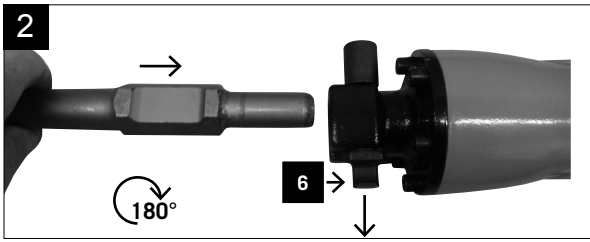
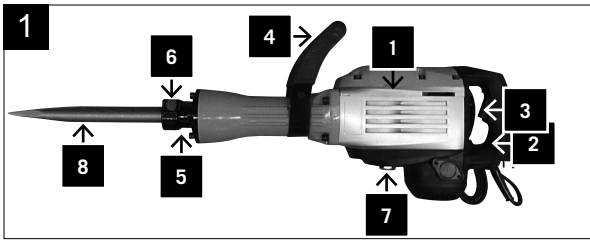
Wear safety ear muffs!



Wear work gloves



Wear safety footwear



Manufacturer:

Scheppach Australia Pty Ltd
 Level 6
 8 Spring Street
 Sydney NSW 2000
 Australia

Contact Details:

www.scheppach.com.au
 1300 855 831
 masterssupport@scheppach.com.au

Dear Customer,

We wish you much joy and success in working with your new machine.

Note:

The manufacturer of this equipment shall be liable in accordance with the applicable product liability law for damage caused to or by this device through:

- Improper handling,
- Noncompliance with the operating instructions,
- Repairs by third parties, unauthorised specialists,
- Installation and exchange of unoriginal spare parts,
- Unintended use,
- Failure of the electrical system due to non-compliance with electrical requirements and Australian specifications.

We recommend:

Before using the demolition hammer, please read the instructions included in this manual carefully.

Read the operating instructions:

Read the operating manual carefully, before putting the demolition hammer in operation or making any adjustments to it.

Dangerous voltage

Caution! Turn off the power supply before making any adjustments to the demolition hammer.

Risk of sudden start

Caution! The demolition hammer may restart suddenly after a power failure.

Read the entire operating instructions before assembly and getting started with the device.

This operation manual should help you to familiarise you with your machine and use it for intended applications.

The operating manual includes important information, on how to work safely, correctly and economically with the machine and how to avoid hazards, save repair costs, reduce downtimes and increase the reliability and service life of the machine.

In addition to the safety regulations of this operating manual, you must follow the national provisions applicable to the operation of the machine.

Keep the operating manual close to the machine, safely in a plastic cover protected against dirt and moisture. It must be read by every operator before starting work and carefully followed.

Work at the machine may be done only by persons, who are instructed on using the machine and the associated hazards. The minimum age specified should be complied with.

Besides the safety instructions included in this operating manual and the special instructions of your country, the generally accepted technical rules should be followed for the operation.

General Information

- Check all parts for any transportation damage after unpacking them. In case of complaints, the supplying carrier must be notified immediately. Later claims will not be accepted.
- Check the shipment for completeness.
- Familiarise yourself with the device before using it, by referring to the operating manual.
- Use only originals parts for accessories, wear parts and spare parts. You will receive spare parts from your specialist dealer.
- Indicate our article numbers as well as type and model of the device in your orders.

Technical Data

Delivery contents	
	Demolition Hammer Point chisel ø30 L410
	Flat chisel ø30 L410
	Oil can
	Wrench 13/23 mm
	Allen key 5/6 mm
	Spare carbon brushes
Specifications	
Blow count [1/min.]	1500
Dimensions L x W x H [mm]	250 x 120 x 960
Blowing force [Joule]	50
Vibration level [m/s ²]	14,3
Weight [kg]	20
Drive	
Motor V/Hz	230-240 V / 50 Hz
Power consumption P1 W	1600
Protection class	B
Type of Protection	IP20
Technical modifications subject to change!	

Characteristic noise values

The noise at workplace may exceed 85 dB (A).

In this case noise protection measures are necessary for the user. (Wear ear protection!)

Sound power level $L_{WA} = 105,0$ dB (A)

Sound pressure level LPA = 83,0 dB (A)

Exposure to noise can cause hearing loss. Total vibration values determined according to EN ISO 3744.

Chisel

Vibration emission value $a_h = 14.3$ m/s²

Note: The vibration value will change due to the field of application of the power tool and may exceed the specified value in exceptional cases.

The specified values are emission levels and do not necessarily represent safe working values.

Although there is a correlation between emission and emission levels, it cannot be inferred with certainty whether additional precautions are necessary or not. Factors that may affect the current emission levels present in the workplace include duration of the effects, the type of working room, other noise sources, etc., the number of machines and other adjacent processes. The reliable working values may vary from country to country. Nevertheless, this information should enable the user to make an assessment of hazard and risk.

General Power Tool Safety Warnings

WARNING Read all safety warnings and all instructions. Failure to follow the warnings and instructions may result in electric shock, fire and/or serious injury.

Save all warnings and instructions for future reference.

The term „power tool“ in the warnings refers to your mains-operated (corded) power tool or battery-operated (cordless) power tool.

1) Work area safety

- a) **Keep work area clean and well lit.** Cluttered or dark areas invite accidents.
- b) **Do not operate power tools in explosive atmospheres, such as in the presence of flammable liquids, gases or dust.** Power tools create sparks which may ignite the dust or fumes.
- c) **Keep children and bystanders away while operating a power tool.** Distractions can cause you to lose control.

2) Electrical safety

- a) **Power tool plugs must match the outlet. Never modify the plug in any way. Do not use any adapter plugs with earthed (grounded) power tools.** Unmodified plugs and matching outlets will reduce risk of electric shock.
- b) **Avoid body contact with earthed or grounded surfaces, such as pipes, radiators, ranges and refrigerators.** There is an increased risk of electric shock if your body is earthed or grounded.
- c) **Do not expose power tools to rain or wet conditions.** Water entering a power tool will increase the risk of electric shock.
- d) **Do not abuse the cord. Never use the cord for carrying, pulling or unplugging the power tool. Keep cord away from heat, oil, sharp edges or moving parts.** Damaged or entangled cords increase the risk of electric shock.
- e) **When Operating a power tool outdoors, use an extension cord suitable for outdoor use.** Use of a cord suitable for outdoor use reduces the risk of electric shock.

- f) **If operating a power tool in a damp location is unavoidable, use a residual current device (RCD) protected supply.** Use of an RCD reduces the risk of electric shock.

3) Personal safety

- a) **Stay alert, watch what you are doing and use common sense when operating a power tool. Do not use a power tool while you are tired or under the influence of drugs, alcohol or medication.** A moment of inattention while operating power tools may result in serious personal injury.
- b) **Use personal protective equipment. Always wear eye protection.** Protective equipment such as dust mask, non-skid safety shoes, hard hat, or hearing protection used for appropriate conditions will reduce personal injuries.
- c) **Prevent unintentional starting. Ensure the switch is in the off-position before connecting to power source and/or battery pack, picking up or carrying the tool.** Carrying power tool/s with your finger on the switch or energising power tools that have the switch on invites accidents.
- d) **Remove any adjusting key or wrench before turning the power tool on.** A wrench or a key left attached to a rotating part of the power tool may result in personal injury.
- e) **Do not overreach. Keep proper footing and balance at all times.** This enables better control of the power tool in unexpected situations.
- f) **Dress properly. Do not wear loose clothing or jewellery. Keep your hair, clothing and gloves away from moving parts.** Loose clothes, jewellery or long hair can be caught in moving parts.
- g) **If devices are provided for the connection of dust extraction and collection facilities, ensure these are connected and properly used.** Use of dust collection can reduce dust-related hazards.

4) Power tool use and care

- a) **Do not force the power tool. Use the correct power tool for your application.** The correct power tool will do the job better and safer at the rate for which it was designed.
- b) **Do not use the power tool if the switch does not turn it on and off.** Any power tool that cannot be controlled with the switch is dangerous and must be repaired.
- c) **Disconnect the plug from the power source and/or the battery pack from the power tool before making any adjustments, changing accessories, or storing power tools.** Such preventive safety measures reduce the risk of starting the power tool accidentally.
- d) **Store idle power tools out of the reach of children and do not allow persons unfamiliar with the power tool or these instructions to operate the power tool.** Power tools are dangerous in the hands of untrained users.
- e) **Maintain power tools. Check for misalignment or binding of moving parts, breakage of parts and**

any other condition that may affect the power tool's operation. If damaged, have the power tool repaired before use. Many accidents are caused by poorly maintained power tools.

f) Keep cutting tools sharp and clean. Properly maintained cutting tools with sharp cutting edges are less likely to bind and are easier to control.

g) Use the power tool, accessories and tool bits etc. in accordance with these instructions, taking into account the working conditions and the work to be performed. Use of the power tool/ for operations different from those intended could result in a hazardous situation.

4) Service

a) Have your power tool serviced by a qualified person using only identical replacement parts. This will ensure that the safety of the power tool is maintained.

5) Hammer safety Warnings

- **Wear ear protectors.** Exposure to noise can cause hearing loss.
- **Use auxiliary handle(s), if supplied with the tool.** Loss of control can cause personal injury.
- **Hold power tool by insulated gripping surfaces, when performing an operation where the cutting accessory may contact hidden wiring or its own cord.** Cutting accessory contacting a „live“ wire may make exposed metal parts of the power tool „live“ and could give the operator an electric shock.

Proper Use

- Before starting work, all protective and safety devices should have been installed on the machine.
- The machine is designed for operation by one person. The operator is responsible for third parties in the work area.
- Observe all safety and hazard instructions at the machine.
- The device is designed for heavy demolition and chiselling work using an appropriate chisel.
- The machine may be operated only according to its intended use. Any use other than that intended is improper. It is not the manufacturer but the user / operator who is liable for any damage or injuries caused.
- Please note that our equipment have not been designed for use in commercial, trade or industrial applications. We do not assume any liability if it is used in commercial, trade or industrial businesses or any other equivalent activity.
- All safety and hazard instructions at the machine must be kept in a legible condition.
- Use the machine only in perfect working condition and according to its intended purpose, as well as adequate consideration of safety aspects and hazards in compliance with this operating manual. All malfunctions which might affect safety must be (allowed to be) rectified immediately!
- The safety, work and maintenance instructions of the

manufacturer as well as the dimensions indicated in the technical data must be followed.

- The relevant accident prevention regulations and other, generally accepted safety rules must be followed.
- The machine may be used, serviced or repaired only by people, who are familiar with it and are instructed about the hazards. Independent modifications to the machine exclude liability of the manufacturer for resulting damage.
- The machine may be used only with original accessories and tools of the manufacturer.
- Despite intended purpose, certain residual risk factors cannot be fully excluded. Due to the design and setup of the machine, the following points may arise:
- Hearing damage when not using the necessary hearing protection.
- Injuries to the eye when not using eye protection
- Any other use is considered improper. The manufacturer does not assume liability for resulting damage; the associated risk is solely borne by the plant operator.

Residual risks

The demolition hammer has been built in accordance with the state of the art and recognised safety standards. Nevertheless, individual residual risks can occur when working.

- Risk of electric shock when using improper mains supply cables.
- Furthermore, latent residual risks can persist in spite of all measures adopted.
- Residual risks can be minimised if „safety information“ and „proper use“ as well as the operating manual are followed altogether.

Before getting started

Make sure before starting that the data on the type plate coincide with the mains specifications.

Always disconnect the power supply before making any adjustments to the device.

- Get to know your machine. Familiarise yourself with its application and limitations, as well as the specific potential hazards.
- Make sure that the switch is OFF before inserting the plug into the socket.
- Make sure that the machine is assembled completely and properly.
- Check the machine before use for damaged parts and determine whether these parts work properly and perform its intended function; in case of doubt, the part is to be replaced.
- Check the alignment of all moving parts, broken or mounting parts, and other conditions that could impair proper operation. Any damaged part should be repaired or replaced by a qualified technician.
- Do not use the machine if a switch cannot be switched on and off correctly.

Caution! Before beginning the operation, check the installation site for concealed electrical cables, gas and wa-

ter pipes using a pipe locator.

Operation

Use only proper equipment.

- Do not force the machine or accessory not to do the work of a larger industrial machine. It works better at the power rating for which it was designed.
- Make all machine adjustments only with the machine switched off.
- Never leave the machine unattended while it is running.
- When switching off, leave the machine only after it comes to a complete standstill.
- Turn the machine off before you unplug it.
- Always unplug the mains cord. Never pull out the plug from the wall outlet by holding the cable.
- Perform maintenance and cleaning of the device regularly.
- Have the device checked, if necessary.

If you are not sure whether a working condition is safe or unsafe, do not work with the machine.

Features Fig.1

- 1 Motor housing
- 2 Handle
- 3 On / Off switch
- 4 Additional handle
- 5 Tool holder
- 6 Locking bolt
- 7 Oil fill opening / sight glass
- 8 Point chisel

Getting started

Using the chisel Fig. 2

- 1 Clean chisel always before inserting it and lubricate the shaft slightly.
- 2 Pull out the locking bolts (6) up to the end stop, turn by 180° and release.
- 3 Insert chisel into the tool holder (5) and slide it up to the end stop.
- 4 Pull out the locking bolts (6) once again, turn by 180° and release.
- 5 Check lock on the tool.

Remove chisel

Pull out the locking bolts (6) up to the end stop, turn by 180° and release, and remove the chisel.

Additional handle Fig.3

For safety reasons, use the demolition hammer only with the additional handle!

- 1 The additional handle (4) provides you safe grip while using the demolition hammer.
- 2 The additional handle (4) can be rotated to any position.
- 3 Loosen the Allen screw (A).
- 4 Turn the additional handle (3) to a convenient and safe working position and tighten the screw (A) again.

Operation / Work Instructions

Caution! For your safety, the machine must be held only at the two handles (3 and 4, Figure 1)!

This will avoid the danger of an electric shock through contact of lines during chiselling.

Switching on / off (Fig. 4)

Switching on: Press the operating switch (3).

Switching off: Release the operating switch (3).

Always keep the chiselling tools sharp.

Note:

- Work only at low pressure when chiselling.
- Excessive pressure loads the motor unnecessarily.
- Sharpen the chisels in time and replace, if necessary.

Electrical connection

Check power supply cables regularly for damage. Make sure that the power cable is not connected to the mains supply when you check.

Electrical connections must comply with the relevant Australian regulations. Only use connecting cables with H 07 RN mark.

An imprint of the type designation on the power cable is mandatory.

Recommendation that the tool always be supplied via a residual current device with a rated residual current of 30 mA or less

Faulty power supply cables

Insulation damage often occurs at power supply cables. Causes are:

- Pressure points when power supply cables are routed through the window or door gaps.
- Bends due to improper fastening or guiding of the power supply cables.
- Interfaces by running over the power supply cables.
- Insulation damage by pulling off the wall outlet.
- Cracks due to ageing of the insulation.

Such defective power supply cables must not be used and are extremely **dangerous to life** because of the insulation damage!

AC motor 230-240 V / 50 Hz

Mains voltage 230-240 V / 50 Hz

Power supply and extension cord must be 3-wire = P + N + SL. - (1/N/PE).

Extension cables must have a minimum cross section of 1.5 mm².

The mains supply is secured up to 16 A.

- The product meets the requirements of EN 61000-3-11 and is subject to special connection conditions. This means that use of the product at any freely selectable connection point is not allowed.
- Given unfavorable conditions in the power supply the product can cause the voltage to fluctuate temporarily.
- The product is intended solely for use at connection points that

- a) do not exceed a maximum permitted supply impedance "Z", or
 - b) have a continuous current-carrying capacity of the mains of at least 100 A per phase.
- As the user, you are required to ensure, in consultation with your electric power company if necessary, that the connection point at which you wish to operate the product meets one of the two requirements, a) or b), named above.

Maintenance

Cleaning

Caution! Disconnect the mains plug!

- Clean the machine each time after completing work.
- The machine should be cleaned regularly to remove dust and dirt.
- Keep safety devices, air vents and the motor housing as dust and dirt-free as possible.
- Clean the device with a clean cloth, or blow it out with compressed air at low pressure.
- All moving parts are to be re-greased at periodic intervals.
- Do not use detergents or solvents as these might damage the plastic parts of the device. Make sure that no water can get inside the device.

Carbon brushes

In case of excessive sparking, have the carbon brushes checked by a qualified electrician.

Caution! The carbon brushes should be replaced only by a qualified electrician.

Check the oil level

The oil level should be checked before each use of the device.

Place the device with the tool holder in the down position on the floor. The oil must be at least 4 mm above the bottom edge of the sight glass. Refill oil, if required.

Oil change: Fig. 5

The oil should be changed after about 40-50 hours of operation.

Recommended oil: 25 ml SAE 15W/40 or similar.

Caution! Switch off the device. Disconnect the mains plug!

1 Unscrew the sight glass (7) using the Allen wrench (B) and drain the oil.

2 To prevent uncontrolled drainage of oil, place the container under the drain plug and collect the oil in it.

Note: Waste oil must be disposed of at the appropriate collection point for used oil!

3 Fill the new oil has reached (about 25 ml) into the oil filler opening, until the oil level has reached the specified level.

4 Tighten the sight glass again.

5 Check the oil level again after a short period.

Replace the Power Cord

If the supply cord of this power tool is damaged, it must be replaced by a specially prepared cord available through the service organization.

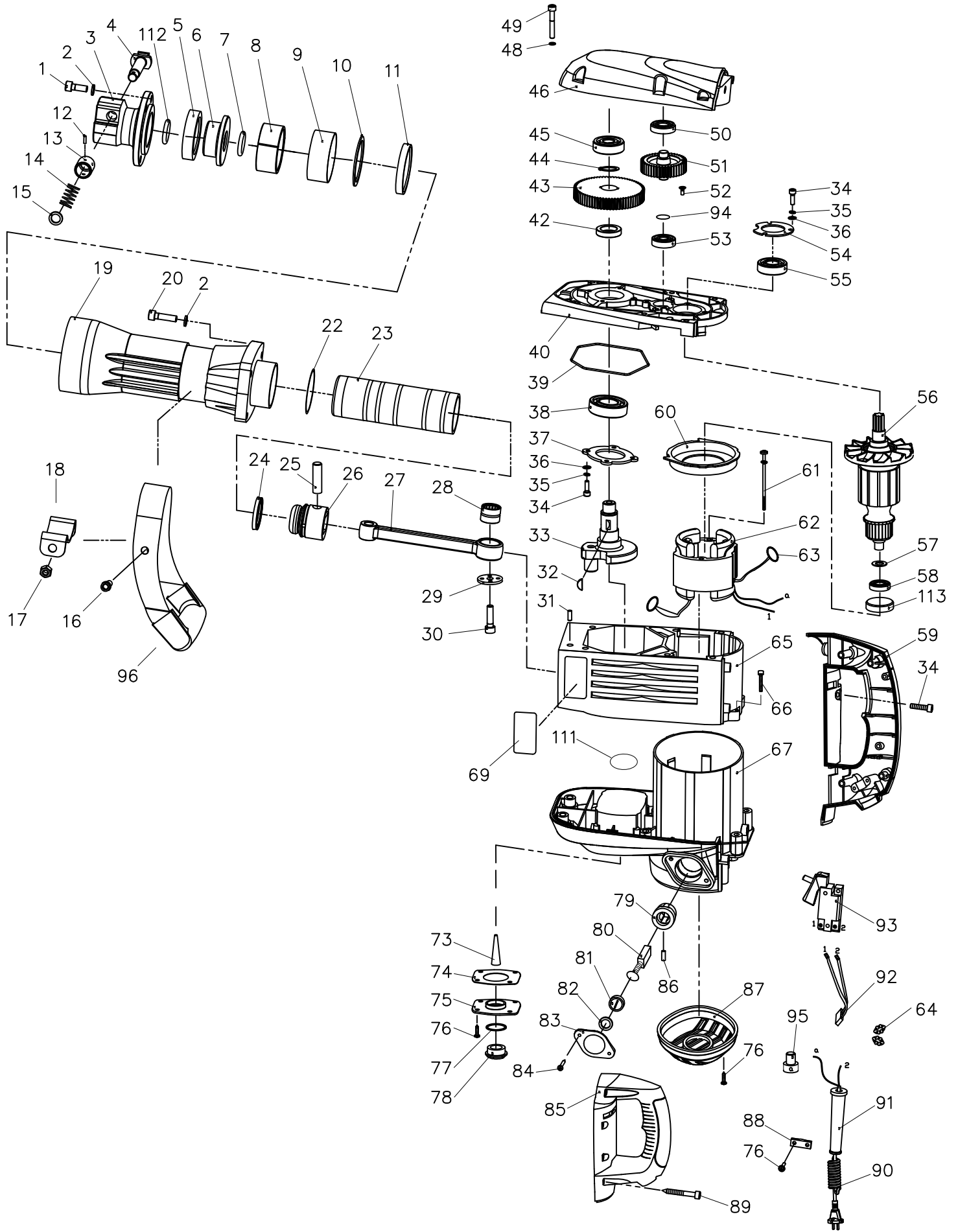
Disposal and recycling

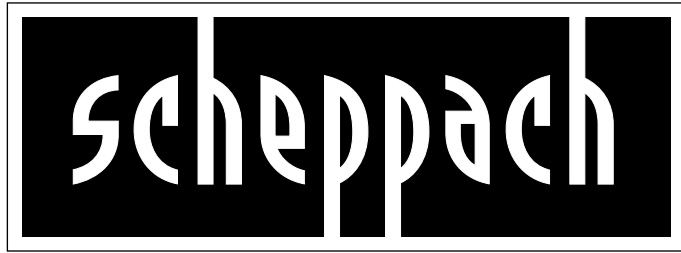
The packaging of various materials should be sent to recycling.

Consult your dealer or municipality.

Troubleshooting

Fault	Possible cause	Corrective action
Motor does not start	a) Failure of mains fuse	a) Check the mains fuse
	b) Extension cable defective	b) Replace defective extension cable
	c) Connections at the motor or switch out of order	c) Check with the help of an electrician
	d) Motor or switch defective	d) Check with the help of an electrician
Motor does not work, the fuse responds	a) Cross-section of the extension cable is not sufficient	a) Refer to Electrical Connection
	b) Overload	b) Check tool





Scheppach Australia Pty Ltd
Level 6
8 Spring Street
Sydney NSW 2000
Australia

5
YEAR WARRANTY